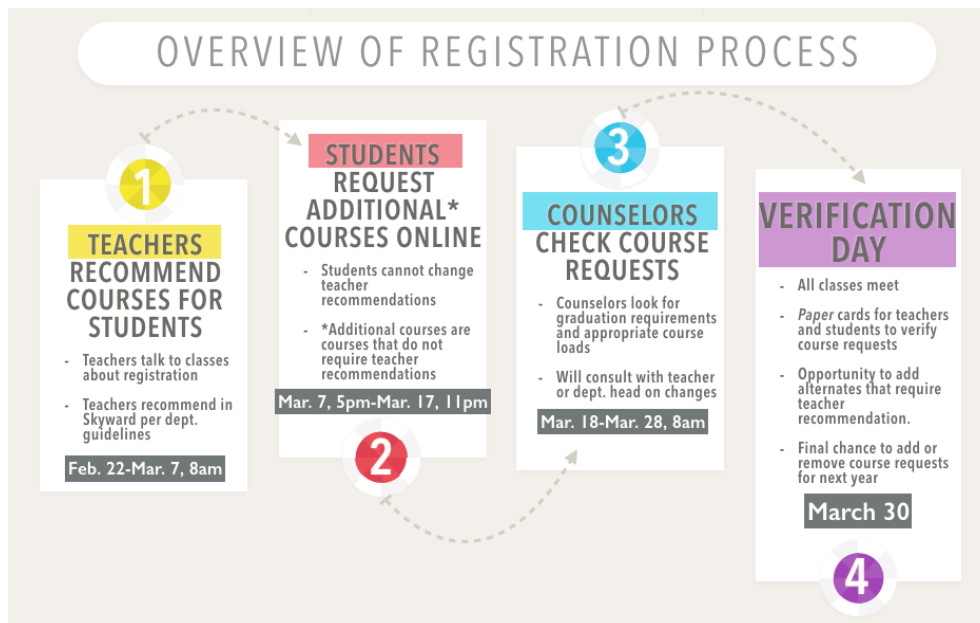


PARENT INFORMATION FOR HS COURSE REGISTRATION 16-17

Dear Parent,

Today marks the start of course registration for your child's 2016-2017 academic year. Your student has received instructions and a registration worksheet in advisory about our course registration process. Please review the information below as you and your student begin to engage in this year's registration period.



IMPORTANT INFORMATION ON COURSE REGISTRATION:

- ➔ **High School course catalogs can be found online at the individual high school's website.** You and your child should go over it carefully as it explains the courses in all departments, as well as the diverse array of electives the high school offers.
- ➔ **This year, students will be entering their elective courses and alternates directly into Skyward via Student Access, and parents will be able to view them in Family Access, between March 7 and 17th.** Because parents and students need to work together to complete this process, we recommend beginning course selection as close to March 7 as possible.
- ➔ Please keep in mind that **the choices students make at this stage impact the number of staff we hire each year and how we structure the school's schedule.** It is important that the course choices be considered very carefully because the ability to make changes after March 30 will be very limited.
- ➔ **Our goal is for preliminary schedules to be available to students during the last week of school.** An arena scheduling session will be held during the last week of school to correct any scheduling errors. Arena scheduling is held in the high school cafeteria and your child's counselor will be available to help finalize your child's schedule before the summer.

NEED HELP?

If you have questions...

... **about accessing your Skyward Family Access account:** email skyward@newton.k12.ma.us or contact your student's house office.

... **about using Skyward Family Access:** see the instructions on the high school website or contact your student's house office.

... **about your student's course selections and recommendations:** contact the recommending teacher and/or your child's counselor

... **about accessing and/or using your Skyward Family Access account:** come to our help sessions at both high schools on Thursday, March 10, from 4pm-7pm in the libraries.